



(An ISO 9001:2015 Certified Company)

TIRUPATI
HYDRAULIC ACCESSORIES



Total Solution for Hydraulic Accessories

www.tirupatifilters.com

SUCTION STRAINER



Aluminum Die Cast Nut - STR3



BIG STRAINER - Sc3 200 TO 600



Steel Nut - SC2



NYLON STRAINER (NSS)

MODEL	THREADED	SIZE	FLOW	FILTRATION MICRON
STR2-002 TO STR2-150	BSP / NPT	1/4" TO 3"	4 LPM TO 600LPM	149 Ss100 MESH STD 30 TO 250 MESH ALSO AVAILABLE
Sc3 - 001 TO Sc3 - 150				
NSS - 002 TO NSS - 100		1/2" TO 3"		
Sc3 - 200 TO Sc3 - 600		4"		

OIL LEVEL INDICATOR



FACE TYPE OIL LEVEL INDICATOR - OLI

"O" Ring type construction for non pressurized tank only available.

in 3,4,5,6 & 10 inch between bolt center

KNOB TYPE OIL LEVEL INDICATOR (T.P.)

Note : Transparent polycarbonate
Suitable for mineral / petroleum based oil

Size : 1/4" to 1" BSP / NPT
and M16 x 1.5 to M - 40 x 1.5



L TYPE OIL LEVEL INDICATOR (LT-OLI)

'O' Ring type construction for non pressurized tanks only.

Model : 3, 4, 5, 6, 8, 10, 12, 15 & 20 inch

KNOB TYPE OIL LEVEL INDICATOR ALUMINIUM

Aluminium resistant to solvents. Oils with additives, Greases, Acid and alkali, water based Fluid. Anodized aluminium star - shaped Contrast Screen and central level sight hole.

Size : 1/4" to 1 1/2" & 2" BSP / NPT
and M12 x 1.5 to M - 46 x 2



FILTERS & ELEMENT

RETURN TANK MOUNTED FILTER - SM2

Model	Q NOM	PORT	P MAX	FILTRATION	ELEMENT CODE
	LPM	BSP / NPT	BAR		
SM2 - 04.25	20	1/2"	10	10/25	SME - 04.25
SM2 - 06.25	60	3/4"		Paper	SME - 06.25
SM2 - 08.25	80	1"	10	149	SME - 08.25
SM2 - 10.25	120	1-1/4"		Wiremesh	SME - 10.25



RETURN IN LINE FILTER - HFR



Model	Q NOM	PORT	P MAX	FILTRATION	ELEMENT CODE
	LPM	BSP / NPT	BAR		
HFR - 10.25	80	3/4"	20	10/25	HFE - 10.25
HFR - 10.25		1"		Paper	HFE - 10.25
HFR - 20.25	150	1-1/4"	20	149	HFE - 20.25
HFR - 20.25		1-1/2"		Wiremesh	HFE - 20.25

FILTER ELEMENT



We are manufacture different type of filter Elements as per customer requirement.

CURVED TOOTH GEAR COUPLING



NYLON SLEEVE & MS GEARS Max Bore Capacity :
19, 28, 38, 48 & 65 MM

BREATHER

FILTER BREATHER ASSEMBLY - FSB



Model	Q nom LPM	MOUNTING
FSB - 05 (S/N)	5 CFM	BAYONET
FSB - 25 (S/N)	25 CFM	BAYONET

TANK BREATHER (TB)

Model	Q nom LPM	Port BSP / NPT	MOUNTING
TB - 05	5 CFM	1/4" TO 1/2"	THREADED
TB - 25	25 CFM	3/4" TO 1.1/2"	THREADED
TB - 35	35 CFM	1.1/2"	THREADED
TB - 65	65 CFM	2"	THREADED
TB - 165	165 CFM	2.1/2" TO 4"	THREADED



Note : Replacement Element available in Size - TB-35, TB-65, TB-165



BREATHER PLUGS

MODELS : TBP & BP
THREADED : BSP / NPT / METRIC
SIZE : 1/4", 3/8", 1/2", 3/4", 1"

CHECK VALVE / NON - RETURN VALVE

Model	Q nom LPM	Port BSP / NPT	P MAX BAR
C - 06 - 1	15	1/4"	
C - 08 - 1	35	3/8"	
C - 10 - 1	50	1/2"	315
C - 15 - 1	120	3/4"	
C - 20 - 1	180	1"	
C - 25 - 1	280	1 - 1/4"	
C - 30 - 1	340	1 - 1/2"	



FLOW DIFFUSER - FD 4

Model	Q NOM LPM	PORT BSP / NPT
FD4-050	50	3/4"
FD4-100	100	1"
FD4-200	200	1-1/2"
FD4-400	400	2"
FD4-500	500	2-1/2"
FD4-600	600	3"



SEALS & PLUG

DOWTY SEALS

Bonded / Dowty seals are Cost Effective Solution for Bolt / Thread Sealing. Versatile, Applicable to All Threaded Bolts, Studs and clearance holes.

MODEL : D.S.

THREADED : 1/8" to 2.1/2" BSP



COPPER WASHER

Copper flat washer made from copper are often used within piping electronics, household products, and biomedical application as copper is malleable and ductile - a biostatic surface that is a good conductor of heat and when very pure, a good conductor of electricity.

MODEL : C.W.

THREADED : 1/8" to 2" BSP

COLLER PLUGS

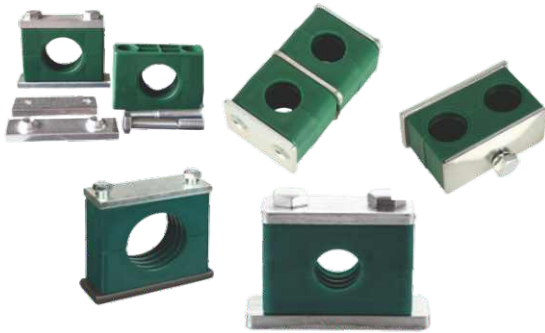
The Coller Plugs DIN 908 is a small easy - to - handle.

MODEL : COLLER PLUG

THREADED : 1/8" to 1½" BSP



TUBE / PIPE CLAMP



We are reliable exporters of a wide range of Tube Clamps. These are designed by our efficient technical experts and are extensively used in the industrial hydraulic systems, mobile hydraulic systems, process industries, and construction of electrical equipments. These are highly effective in reducing noise, lower vibration and are shock proof. The welded plates are coated with zinc. These are made available in diverse sizes and manufactured using quality polypropylene and polyamide materials.

STANDARD SERIES TUBE CLAMP

Tube clamp are best known tube clamp with sufficient strength this Tube Clamps are more suitable where hydraulic pipe lines are required to be straight in short as well as long length. Tube clamps are made out from high density polyethylene materials having good strength and mild steel plates.



HEAVY DUTY SERIES TUBE CLAMPS

Heavy series pipe clamps can withstand the shock and vibration that a hydraulic system operating at up to 5,000 psi can deliver. With the use of our Double Heavy design, lines with operating pressure of up to 10,000 psi can be accommodated. Standard hardware material is plain carbon steel. Also available from stock are 304SS and 316SS hardware. The heavy series can be mounted using a weld plate, rails, and stacking kits. Many other options are possible with existing hardware and custom arrangements are always a possibility.



ALUMINIUM PIPE CLAMP

Tube clamp are best known tube clamp with sufficient strength this tube clamps are more suitable where hydraulic pipe lines are required to be straight in short as well as long length. Tube clamps are made out from Aluminum materials having good strength and mild steel plates. Tube clamps are in various sizes.



PRODUCTS RANGE

- Suction Strainer
- Tank Mountain Stainer
- Oil Level Indicators
- Tank Breather
- Breather Plug
- Curved Tooth Gear Coupling
- Return Line Filter
- Filter Elements
- Flow Diffusers
- Check Valve
- Hydraulic Accessories
- Pipe Clamps
- Bell Housing



GOOD QUALITY



RESEARCH & DEVELOPMENT



15Y PRODUCTION EXPERIENCE



OUR TEAM



TIRUPATI INDUSTRIES

Since:2005

(An ISO 9001:2015 Certified Company)

Manufacturer & Exporter of Hydraulic Accessories

Corporate Office & Manufacturing Unit :

12, Icon Ind Park, B/h. Radhika Estate, Nr. CIFS Camp, Odhav, Ahmedabad-382415. Gujarat, India.

Phone : +91 9624163920, +91 90549 63920

Email: sales@tirupatifilters.com

Web: www.tirupatifilters.com